



# CYTONEL-PLUS

U L T R A R A P I D I H C K I T

Detecting metastatic breast cancer cells in frozen sections



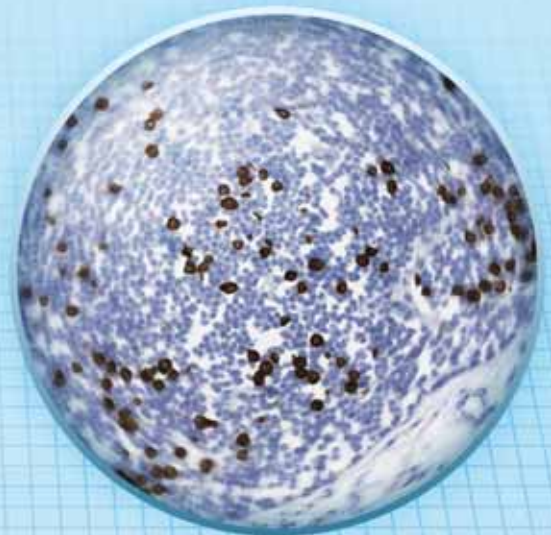
- Offers rapid immunostaining
- Ready to use kit
- The procedure takes ~6 min to perform
- CE-IVD registered product

## PRODUCT IDs

CYTONEL-PLUS Ultrarapid IHC kit

CNP-100 100 tests / slides

CNP-20 20 tests / slides



CE

IVD

Jilab Inc.

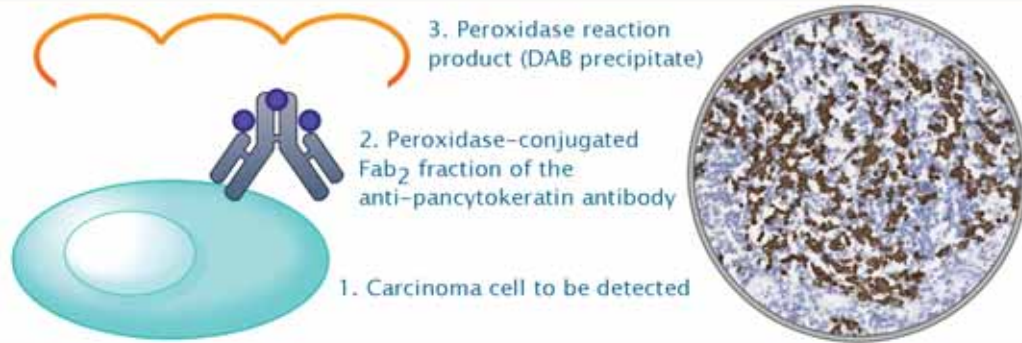
Biokatu 6  
33520 Tampere  
Finland

Tel/Fax +358 3 364 2110  
Mob +358 50 300 5609

[www.jilab.fi](http://www.jilab.fi)  
[info@jilab.fi](mailto:info@jilab.fi)



## CytoneI-Plus kit staining principle



### Scientific literature of intraoperative cytokeratin immunostaining

**Leikola J et al. Cancer 2005 Jul 1;104(1):14-9**

Extensive study (995 patients) with CytoneI kit (former model of CytoneI Plus) showed rapid IHC to be effective and helping to point out more easily lobular breast cancer metastases.

**Krishnamurthy S et al. Cancer 2009 Apr;115:1555-1562**

"Frozen section analysis plus rapid cytokeratin immunostaining have a role in the intraoperative evaluation of sentinel lymph nodes."

**Holm M. et al. The Breast 2008 Aug (17;4):372-375**

"In conclusion, intraoperative IHC staining of the SNB lowered the late positive rate and gave an overall cost saving."

**Choi YJ et al. Jpn J Clin Oncol. 2006 Aug;36(8):489-93**

Evaluated 178 cases. Conclusion: "Ultrarapid IHC enhances intraoperative detection of sentinel node micrometastases"

**Lee IK et al. Eur J Surg Oncol 2006 May;32(4):405-9 2**

Research reported that rapid IHC was able to point out 7 metastases out of 90 lymph node samples which were not distinguished by routine staining. All the metastases were confirmed by FFPE cross section PAD-study.

**Johnston E et al. Applied Immuno Mol Morphol 2006 Mar;14(1):57-62**

Conclusion: "Rapid IHC improves sensitivity than when using intraoperative H & E alone"

**Nährig J et al. Breast J. 2003 Jul-Aug;9(4):277-81**

"Ultrarapid IHC was a very sensitive and rapid technique for the intraoperative detection of metastatic involvement of sentinel lymph nodes"

CE

IVD

Jilab Inc.

Biokatu 6  
33520 Tampere  
Finland

Tel/Fax +358 3 364 2110  
Mob +358 50 300 5609

www.jilab.fi  
info@jilab.fi